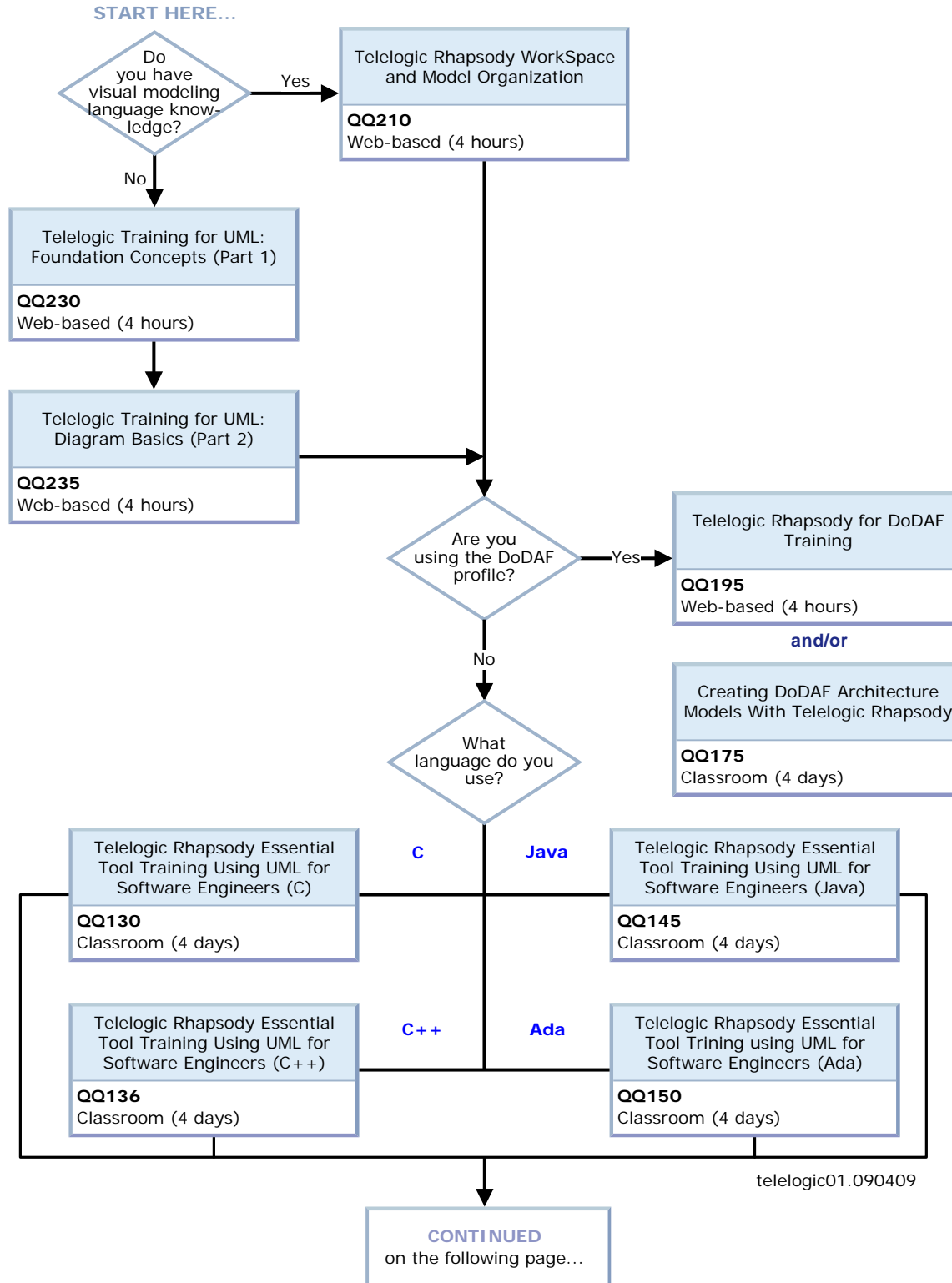


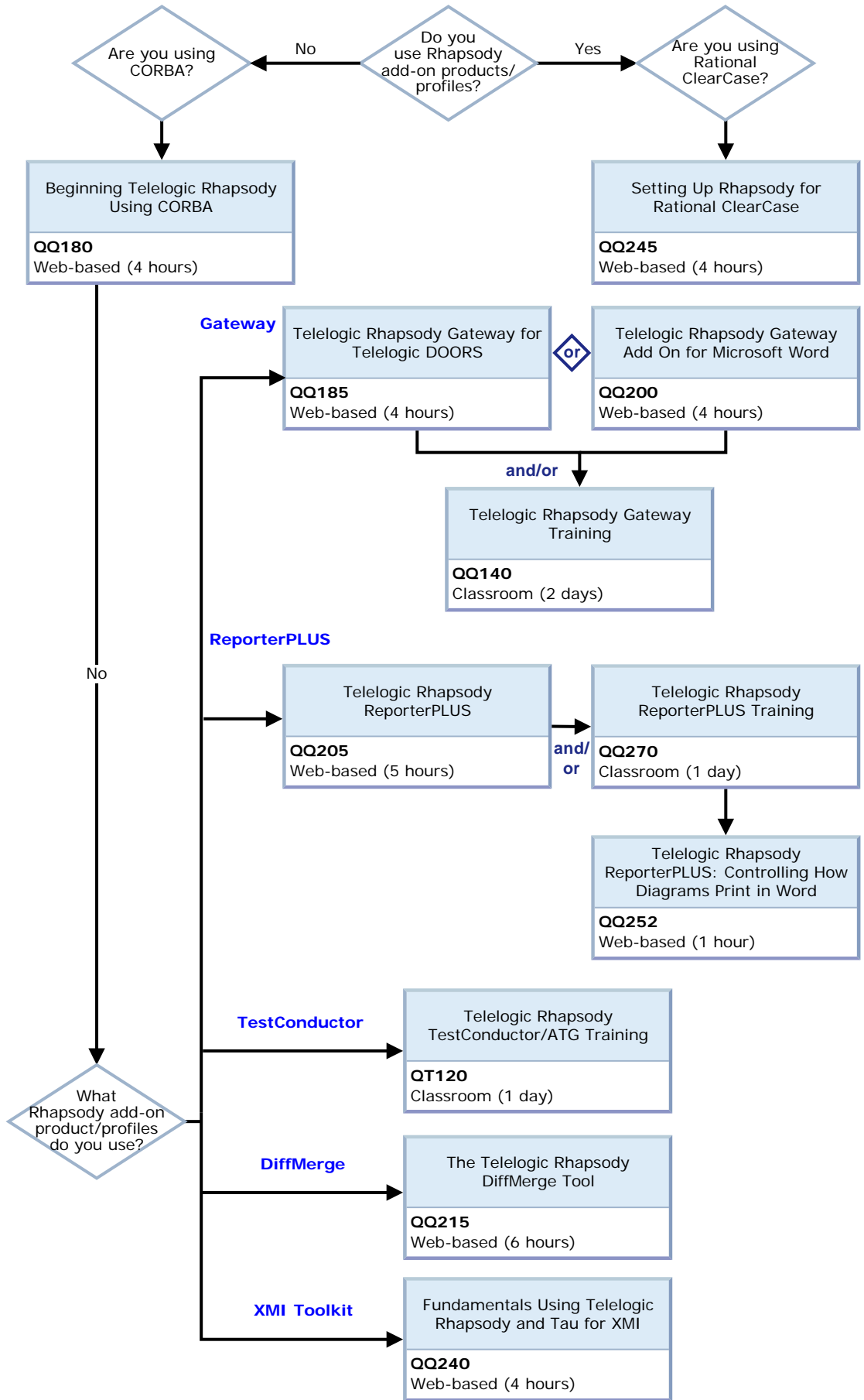


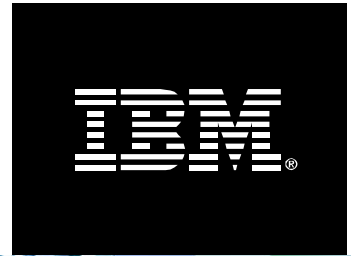
Rhapsody Software Engineer

The Rhapsody Software Engineer is responsible for performing model-driven development for technical, real-time, or embedded systems. By leveraging the power of graphical modeling for code generation, the software engineer depicts the behavior of a system and validates it through simulation and automated testing.



CONTINUED
from the previous page...



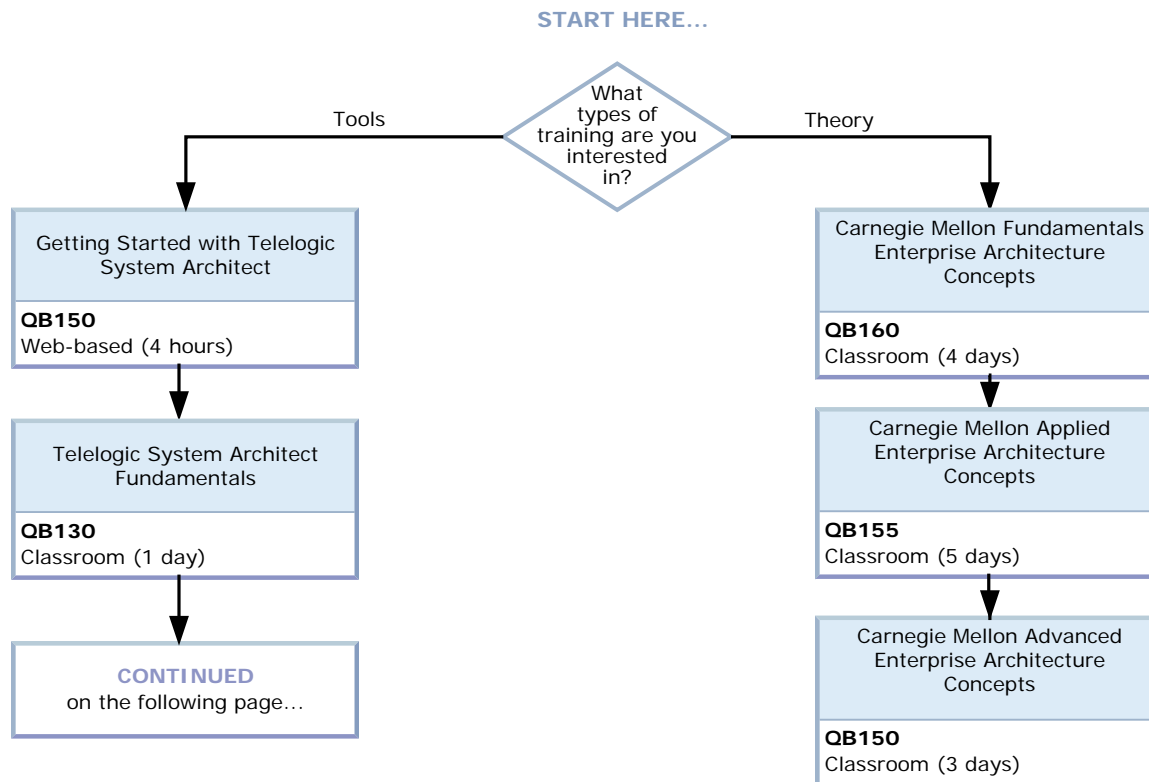


Enterprise Architect / Business Architect

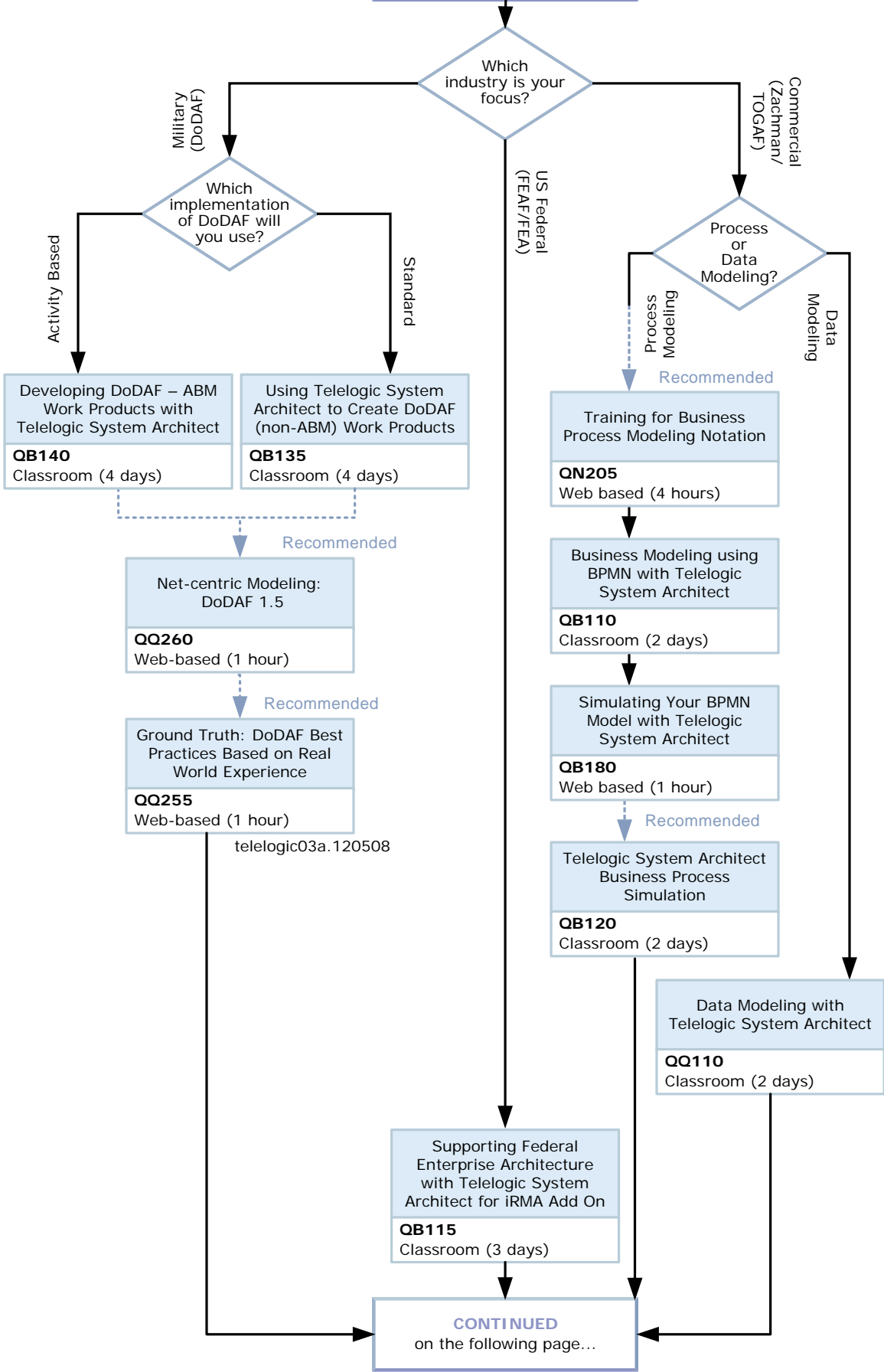
Provide overall leadership for all architectural and technological matters with respect to the company's IT environment. Analyze business issues and existing business process to recommend solutions that align with objectives of the future business process model.

Works towards improving how an enterprise conducts business by capturing the current architecture, consisting of and the relationships between business strategy and processes as well as the supporting Information Systems, Data, and IT Infrastructure. Sets goals and helps the organization transition from a current state architecture to a future architecture that will reduce cost, provides more efficient use and reuse of resources. Responsible for creating and maintaining the overall technical (hardware and software) direction and technical infrastructure of the entire enterprise IT environment, including creating and maintaining the overall security strategy. The Enterprise Architect may be a Chief Technology Officer or a Chief Information Officer.

When addressing Service-Oriented Architectures (SOA), the Enterprise Architect is the keeper of the SOA vision, which advocates think strategically, act tactically. Rather than commissioning huge projects to rip and replace the existing systems, the Enterprise Architect favors the ongoing roll out of small enhancements as a means to migrate to the desired structure.



CONTINUED
from the previous page...



CONTINUED
from the previous page...

Additional
Recommended
Training

Proceed to training path:
Administrator/Advanced User

Proceed to training path:
Enterprise Architect for Solution Delivery

Are you
currently using
DOORS for
Requirement
Mgmt.

No → Proceed to training path:
DOORS

Yes

Enterprise Architecture and
Requirement Management
QN165
Classroom (1 day)

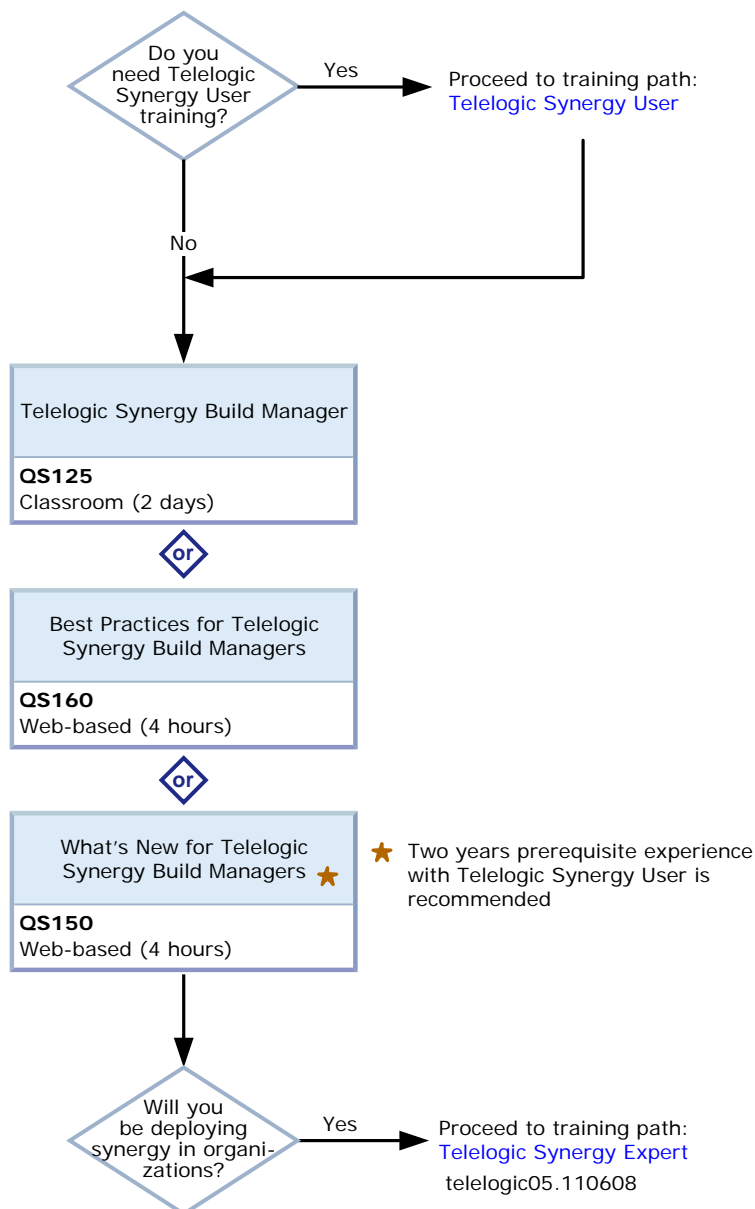


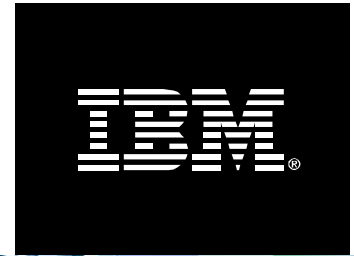
Telelogic Synergy Build Manager

START HERE...

Advanced users of Telelogic Synergy who know how to efficiently coordinate team engineering with synergy using standard process templates.

Special Note: Before you proceed with this training path, it is recommended you complete or have equivalent knowledge of the courses in the Telelogic Synergy User training path.



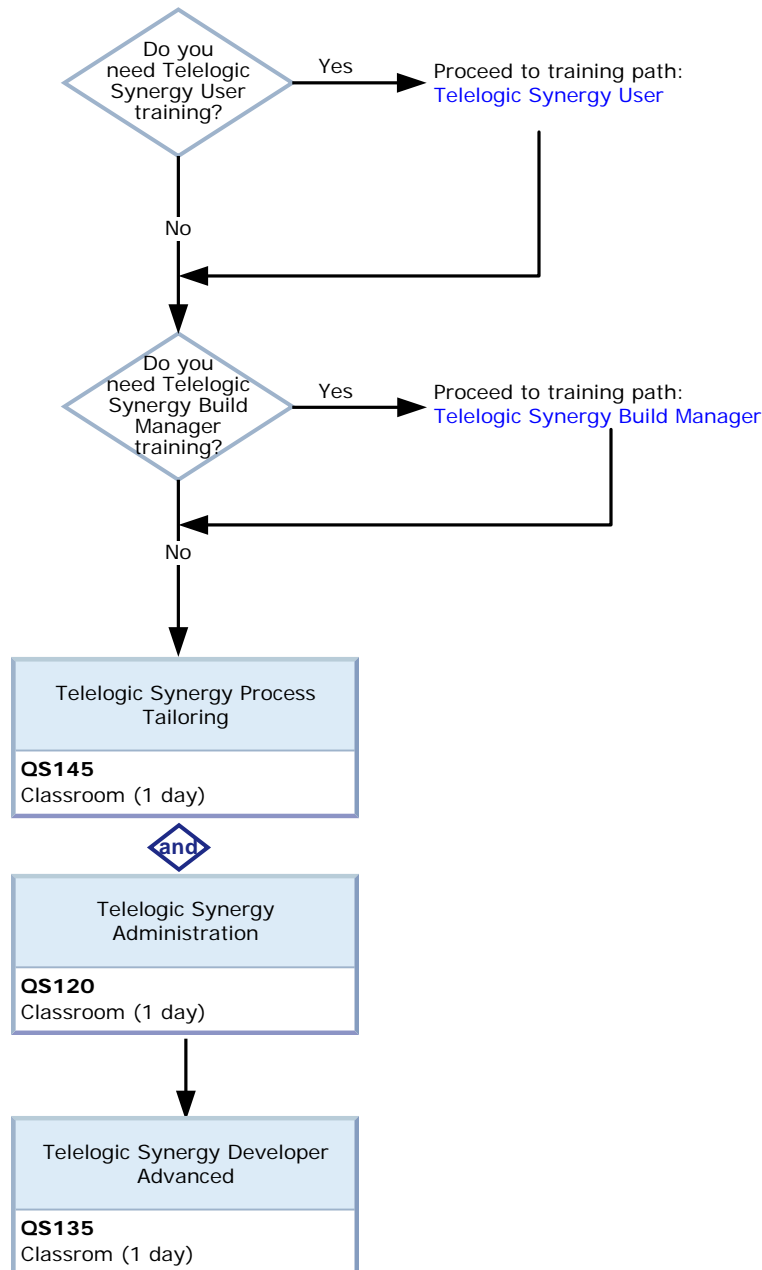


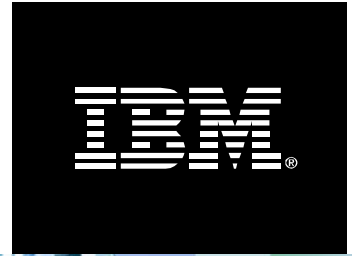
Telelogic Synergy Expert

START HERE...

Telelogic Synergy Experts are members of the core synergy support who know how to deploy synergy in organizations, in order to help achieve business goals.

Special Note: Before you proceed with this training path, it is recommended you complete or have equivalent knowledge of the courses on both the Telelogic Synergy User and Telelogic Synergy Build Manager training paths.

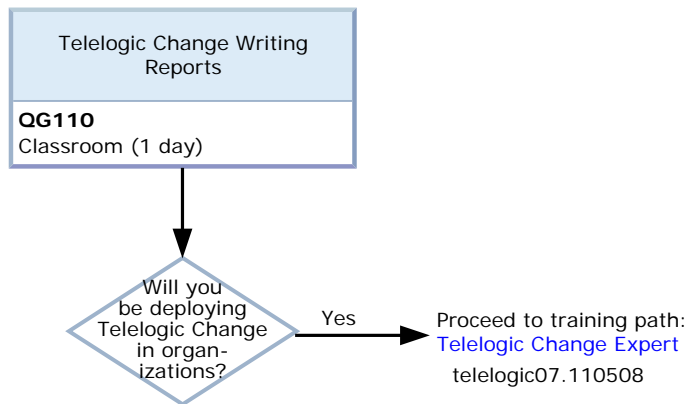




Telelogic Change User

START HERE...

Telelogic Change users are stakeholders of the organization change process and uses Telelogic Change to efficiently extract information.



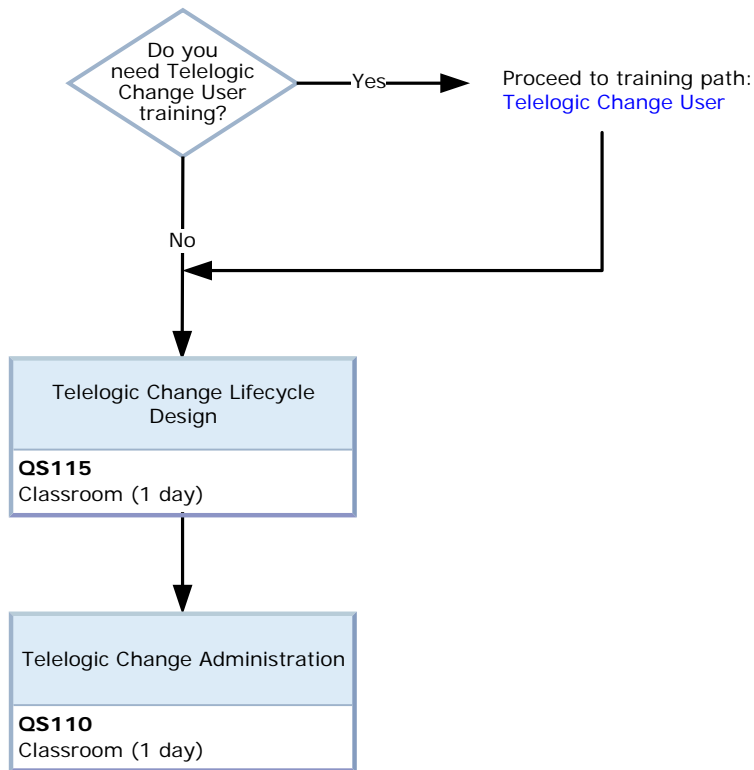


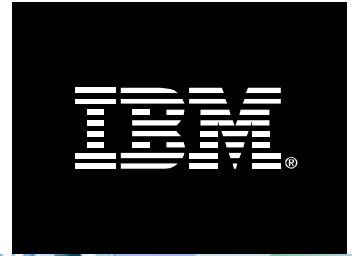
Telelogic Change Expert

START HERE...

Telelogic Change experts have change process and tool administration expertise and know how to deploy Telelogic Change in organizations.

Special Note: Before you proceed with this training path, it is recommended you complete or have equivalent knowledge of the courses on the Telelogic Change User training path.

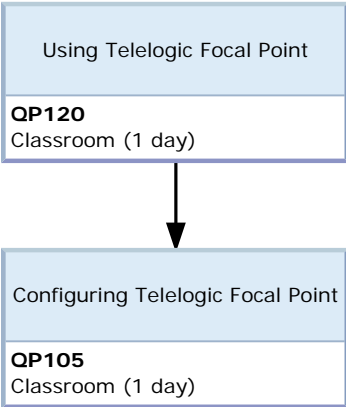




Telelogic Focal Point User

The Focal Point User is typically in the role of product manager, requirement analyst, product marketing or developer who uses the tool to help their organizations select the right product features and deliver them to the right market at the right time by improving product decision-making.

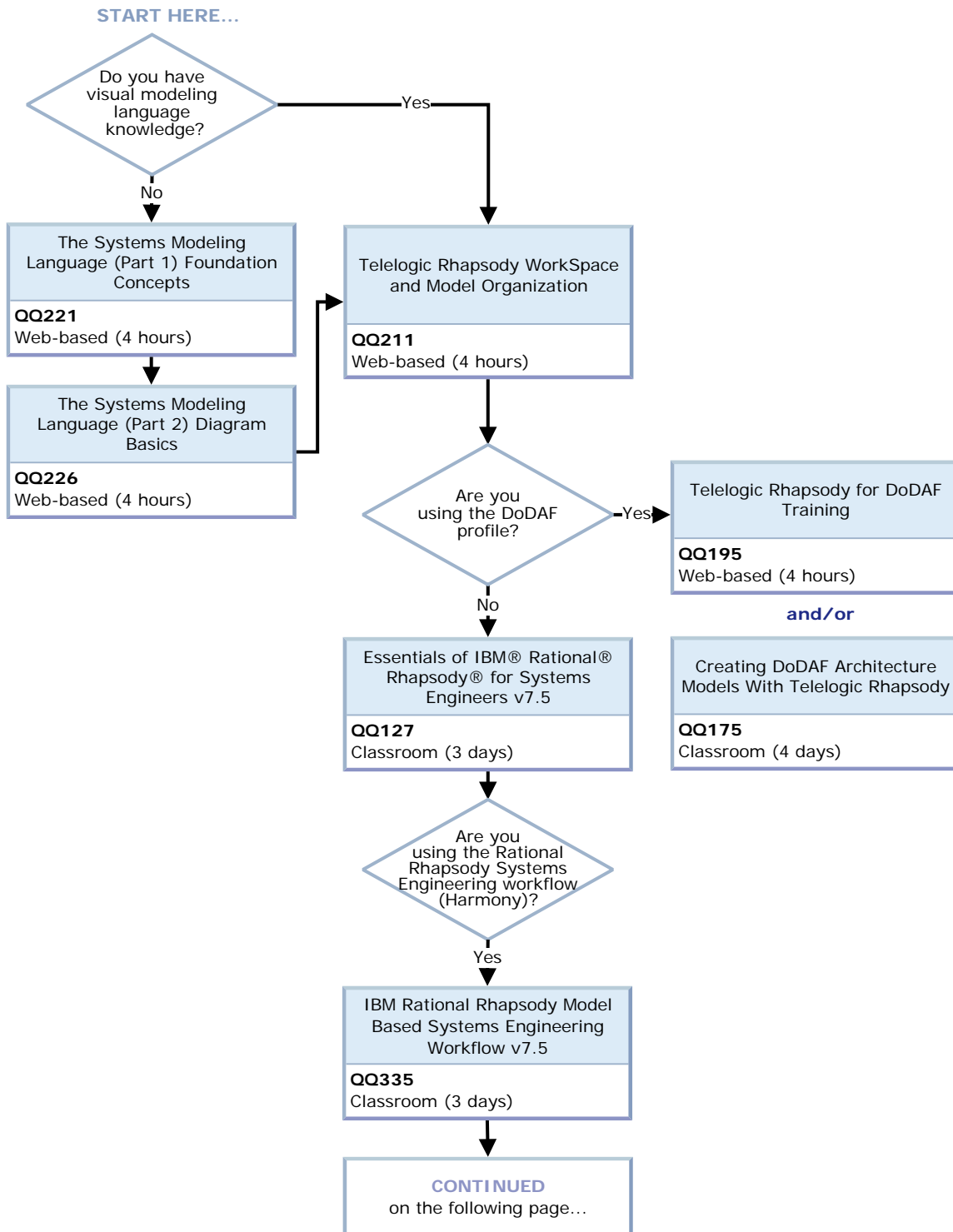
START HERE...



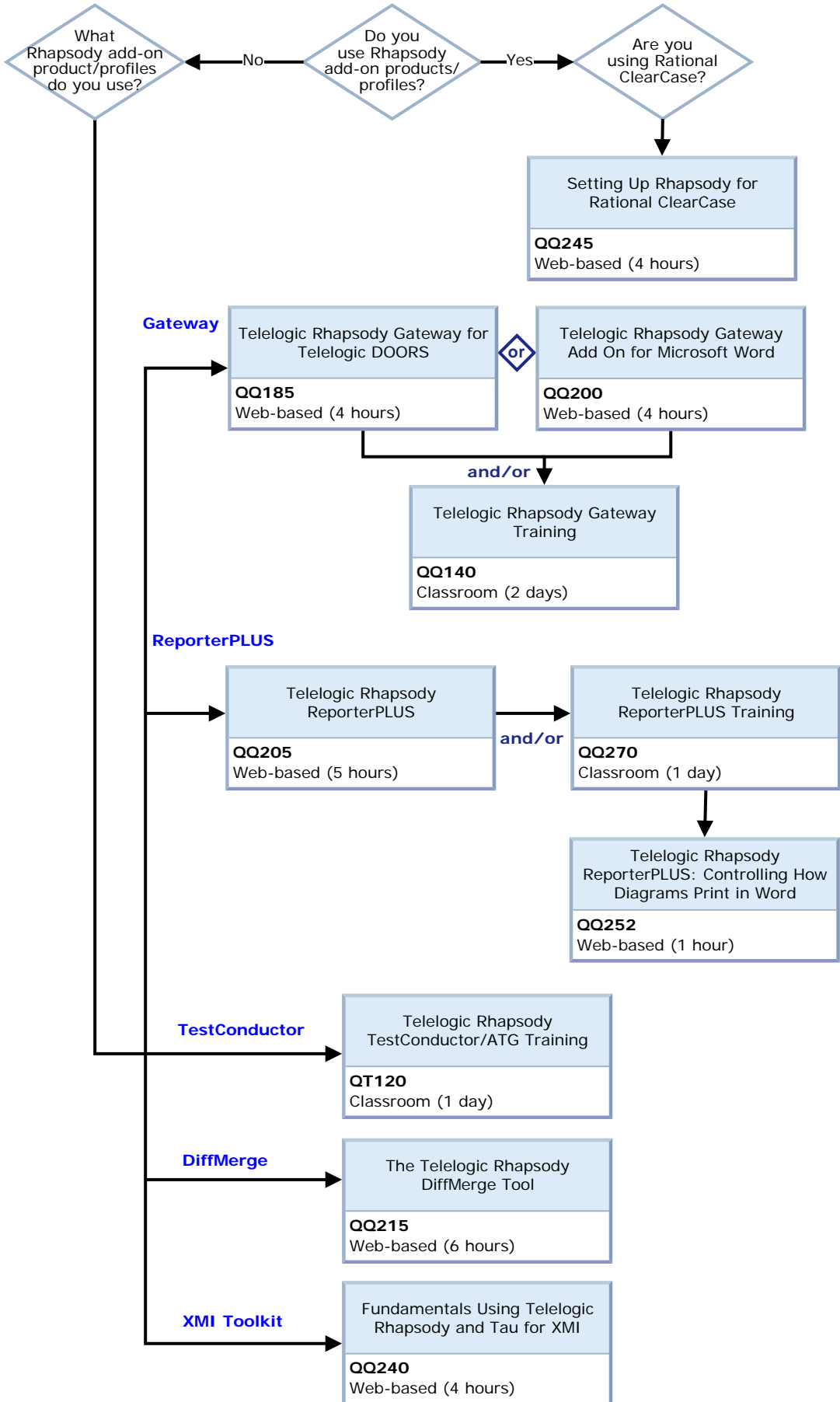


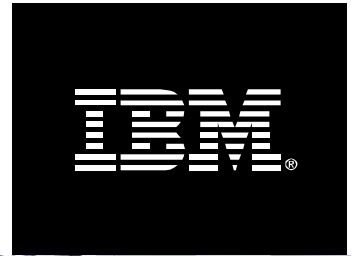
Rhapsody Systems Engineer

The Rhapsody Systems Engineer is responsible for using Rhapsody at all phases of the systems analysis and design lifecycle. The Rhapsody Systems Engineer creates systems engineering models for requirements analysis, system functional analysis, system architectural design and subsystem architectural design.



CONTINUED
from the previous page...

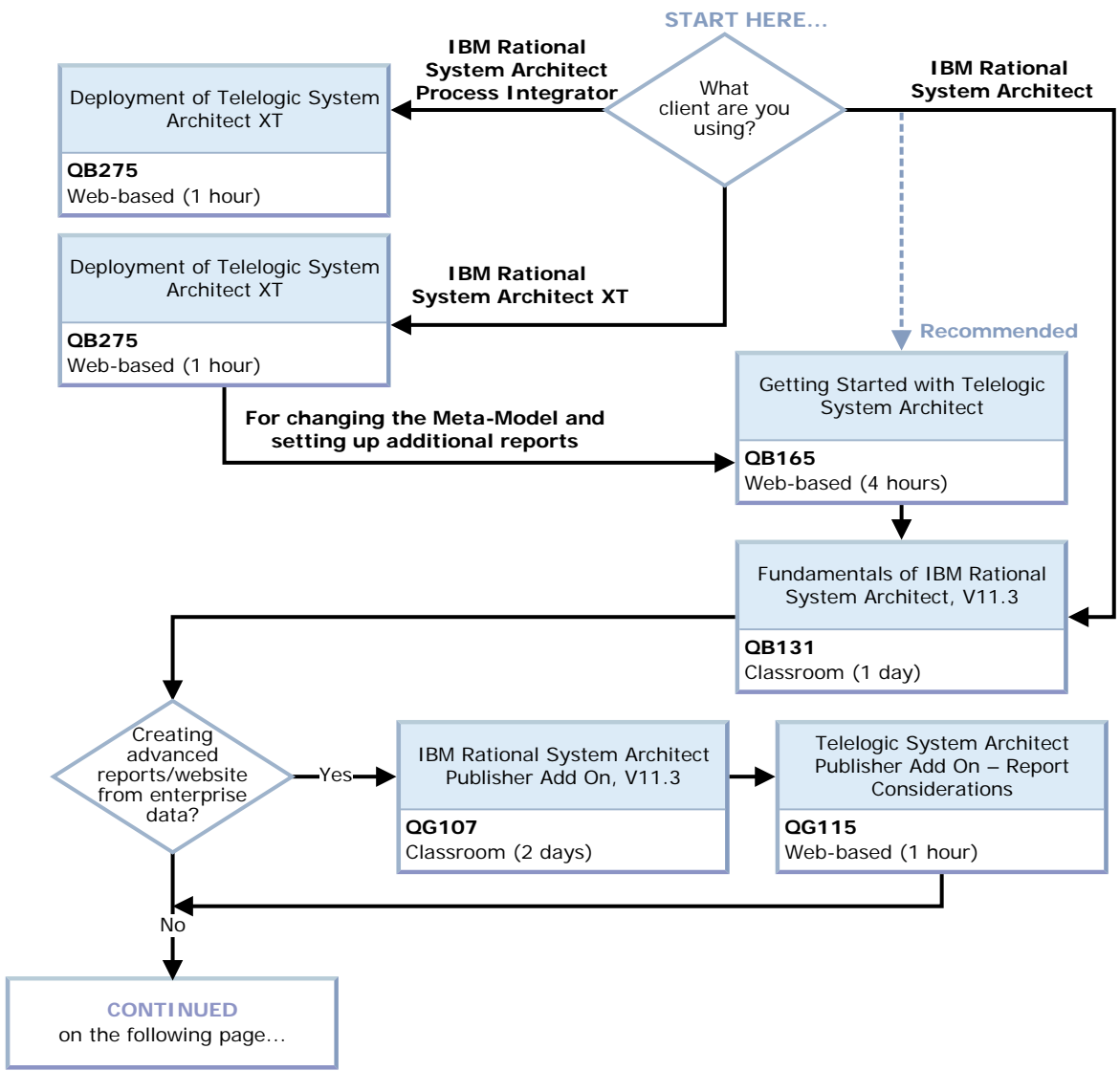




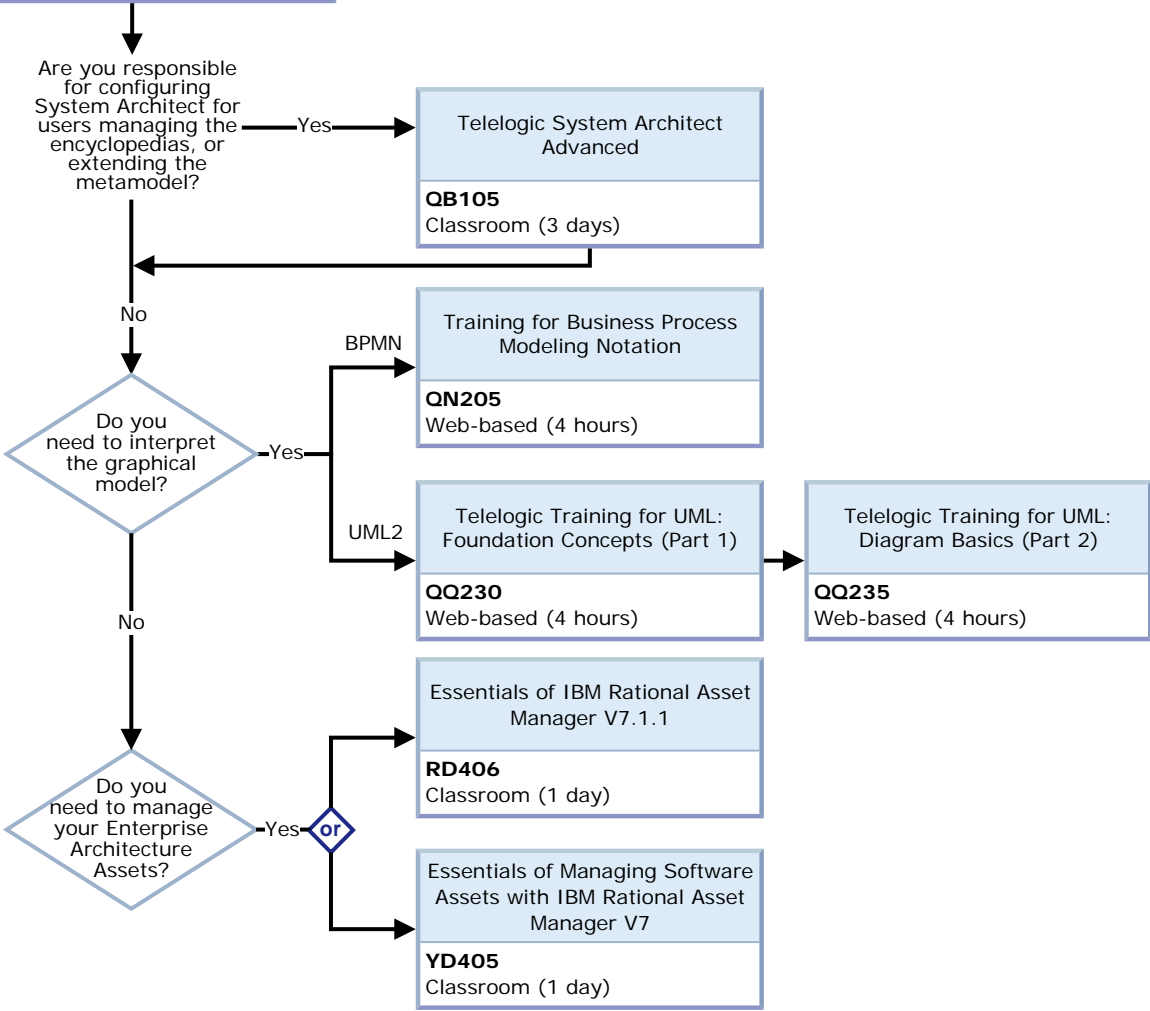
IBM Rational System Architect Administrator/Advanced User

Assures that tools and artifacts work harmoniously. Is responsible for the proper installation of software and connection to encyclopedias via SQL/Oracle server. Works with project managers to assign user identify and access rights. Manages the encyclopedia (back-up and restore). Is able to extend the metamodel, properties and relationships of IBM Rational System Architect as instructed by project manager. Responsible for migration of data to new versions of the tool.

Responsible for performing all operational processes and procedures, ensuring that all IT services and infrastructure meet operational targets and that all configuration items are appropriately recorded.



CONTINUED
from the previous page...

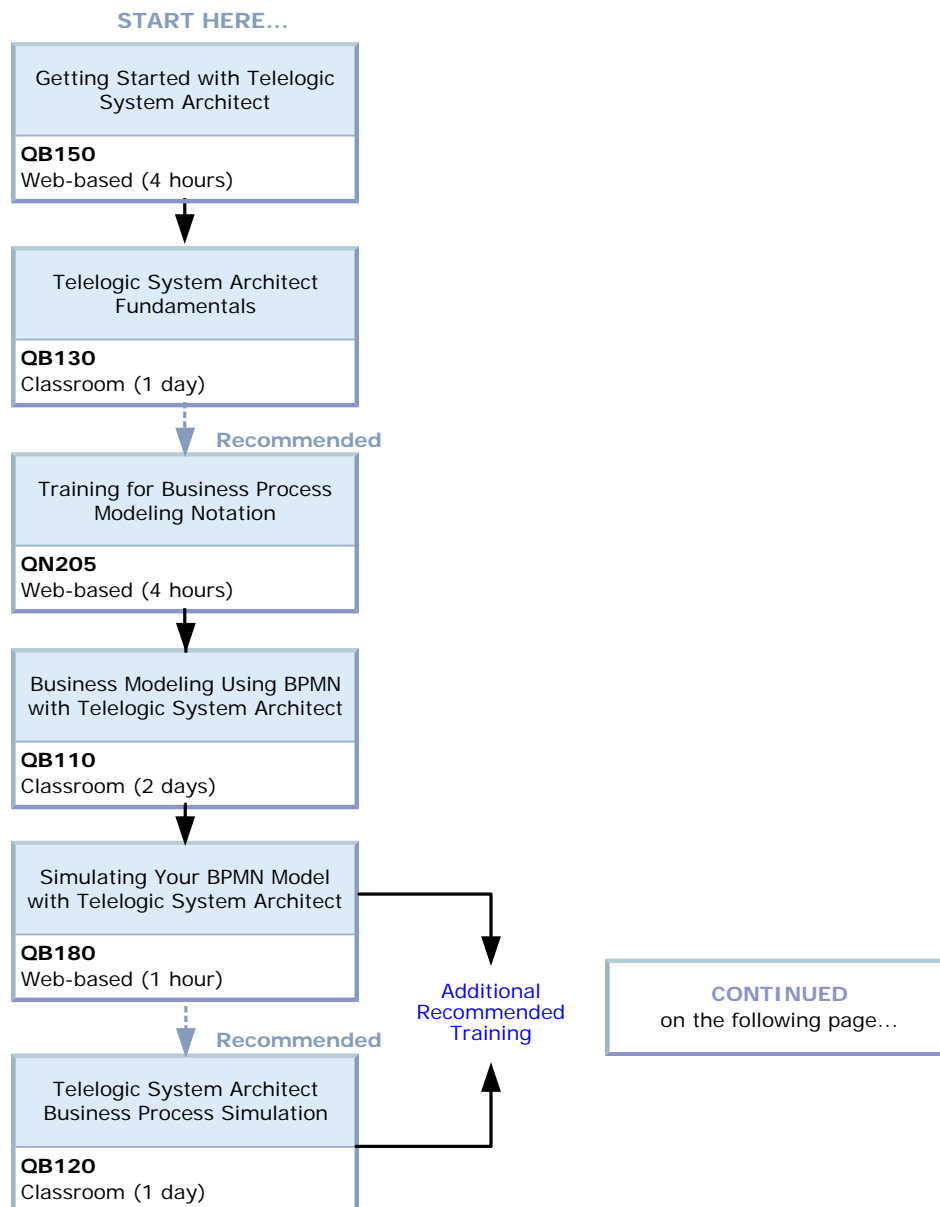




Business Process Analyst

Focuses on improving process and activities that provide value to customers. Identifies and analyzes requirements from a business perspective. Spotlight the customer needs as well as the development organization's ability to fill the needs with a software solution.

Defines current and future operational scenarios (processes, models, use cases, plans, and solutions) and ensures proper translation of business requirements to IT solution requirements.



CONTINUED
from the previous page...

Additional
Recommended
Training

Proceed to training path:
Administrator/Advanced

Proceed to training path:
Information (Data) Architect

Are you
currently using
DOORS for
Requirement
Mgmt.

No

Proceed to training path:
DOORS

Yes

Enterprise Architecture and
Requirement Management
QN165
Classroom (1 day)

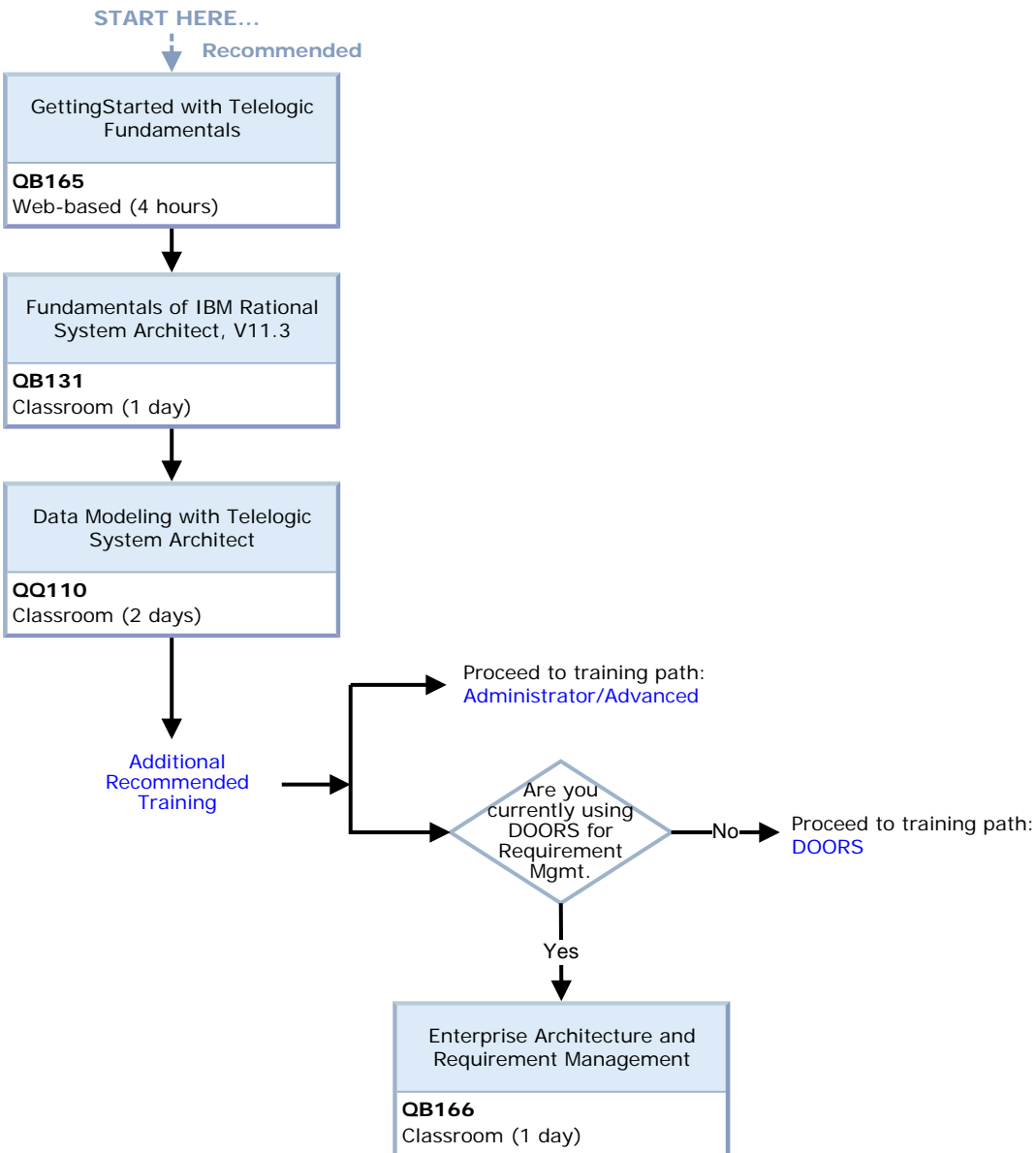


Information (Data) Architect

Architect the structure for storing and managing the data for a solution. Define the associated technical information deliverables.

Responsible for the design of the elements required to structure the data aspects of a solutions, including databases, file systems, and storage management. The Information Architect defines information type and structure for users. The database design information is maintained in the data in the data model.

By conducting research with users, the Information Architect defines and creates solution-related taxonomies and business views of data, and evolves design in response to demand.

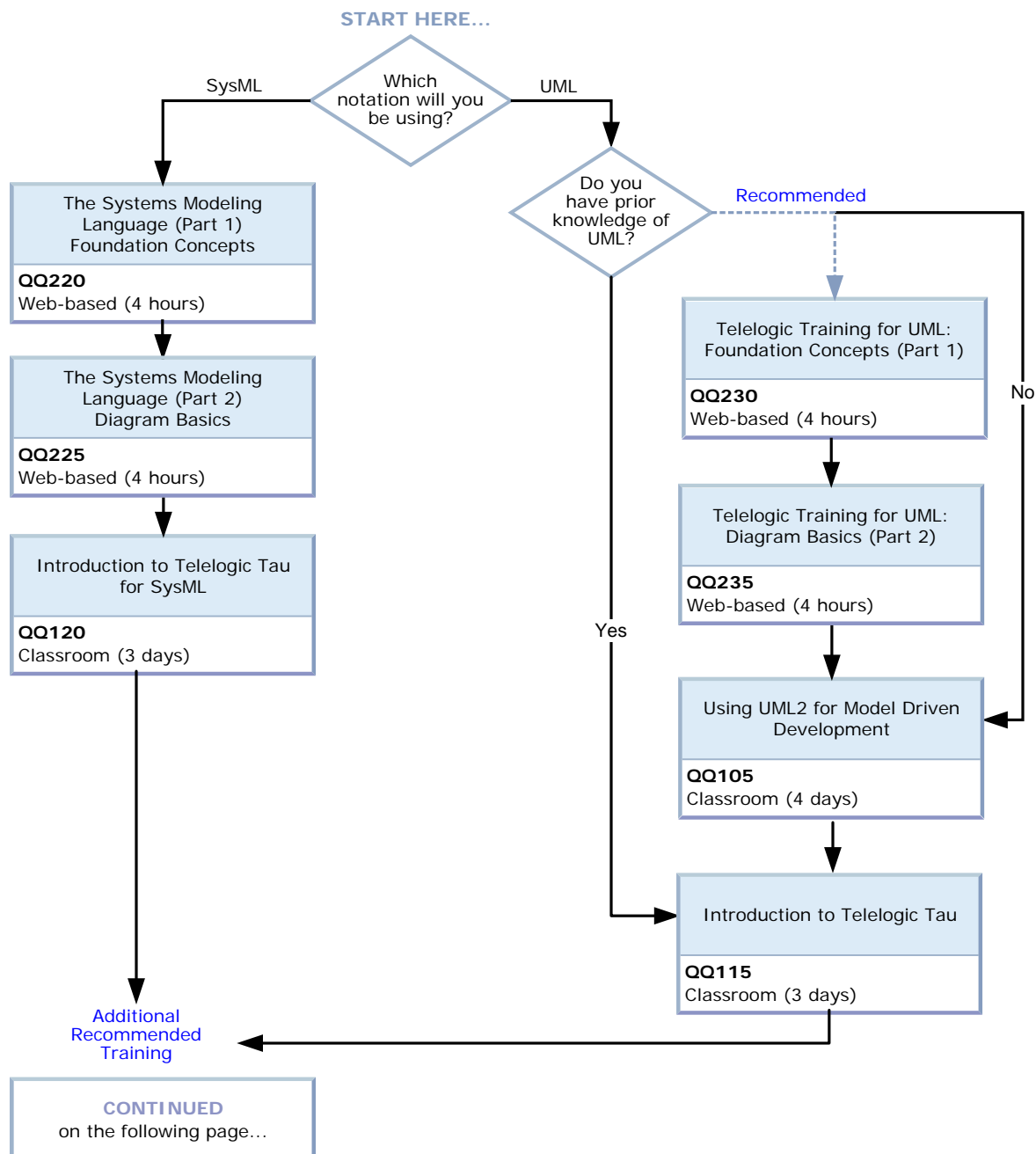




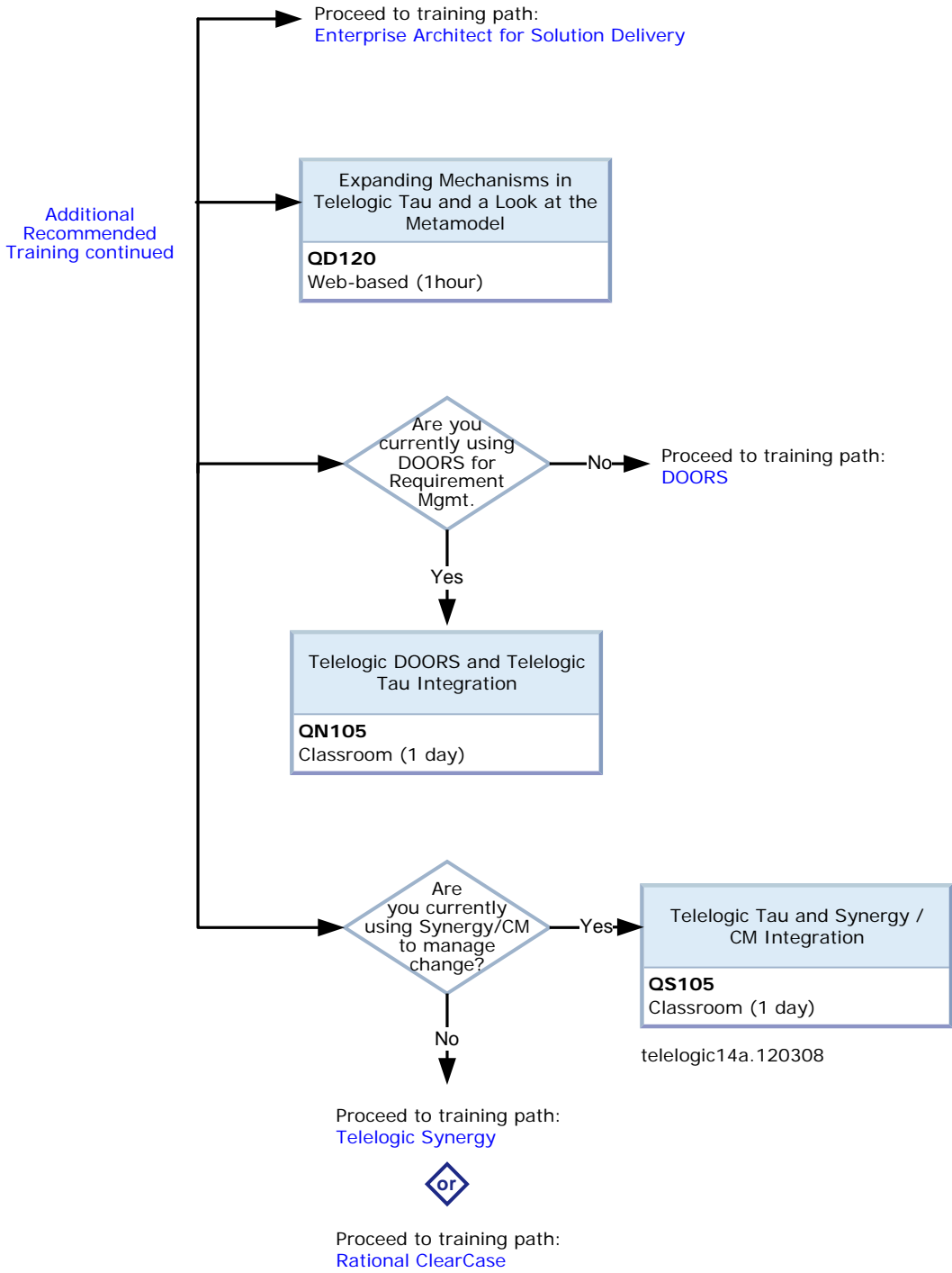
Telelogic Tau Systems Engineer

Develop the business applications and services according to the planned architecture, incorporating both functional as well as presentation aspects of the offering. Create individual modules of software to integrate and re-use across many applications. Validate viability of requirements and application artifacts.

Responsible for developing the business services according to the architecture model, concentrating on the functional aspects of the application as well as the presentation of the application artifacts. The System Engineer is also responsible for the creation of solution prototypes to validate ideas and business needs, and to generate a library of re-usable components and other assets that are designed for use in multiple applications.



CONTINUED
from the previous page...

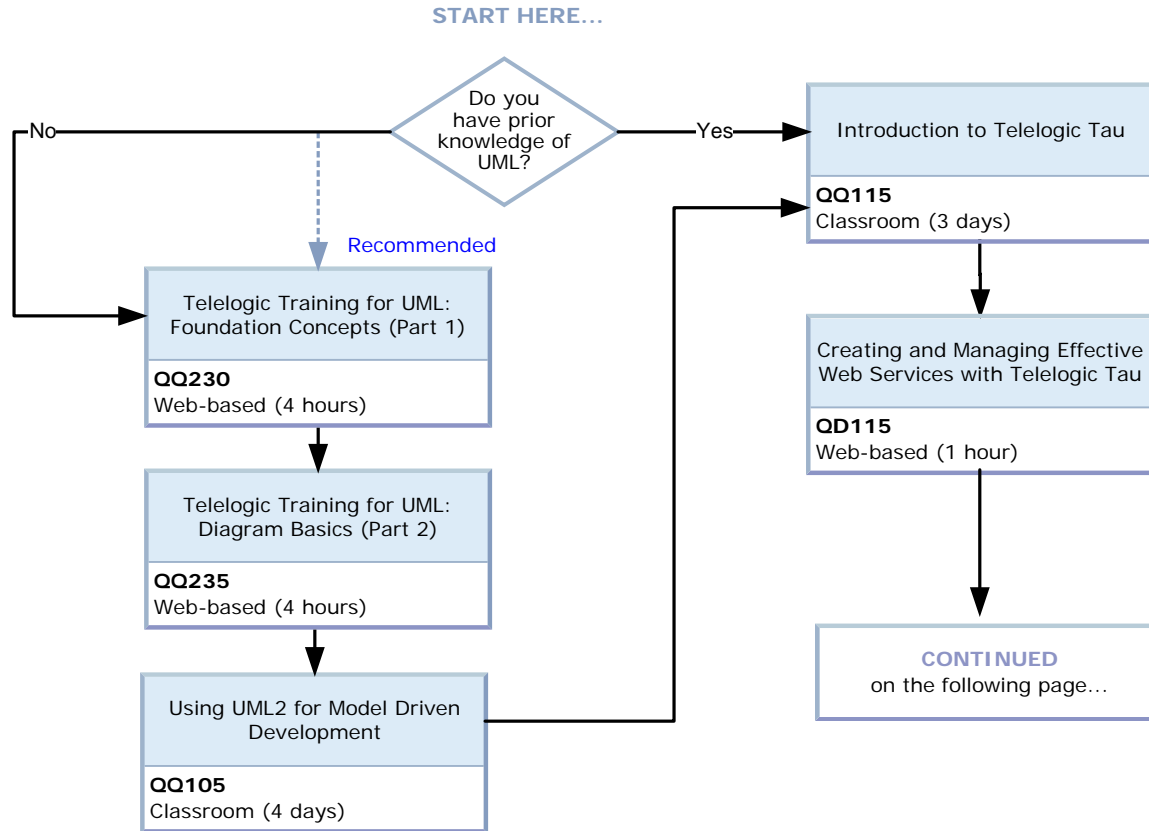




Telelogic Tau Service Architect

Elaborate customers' service specifications and negotiate and manage service levels through agreements. Build platform independent models with focus on reuse of Services and Information Technologies. Perform validation testing.

Consults with the customer and serves as the main contact point for customer service level requirements. The Service Architect is responsible for negotiation and management of service levels through service level agreements, internal Operational Level Agreements, and external Underpinning Contracts.



telelogic15.121108

CONTINUED
from the previous page...

Additional
Recommended
Training

Proceed to training path:
[Enterprise Architect for Solution Delivery](#)

Expanding Mechanisms in
Telelogic Tau and a Look at the
Metamodel
QD120
Web-based (1hour)

Are you
currently using
DOORS for
Requirement
Mgmt.

Yes

Telelogic DOORS and Telelogic
Tau Integration
QN105
Classroom (1 day)

No

Proceed to training path:
[DOORS](#)

Are you
currently
using Synergy/CM
to manage
change?

Yes

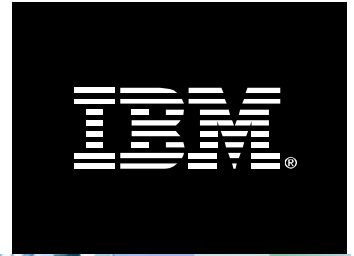
Telelogic Tau and Synergy /
CM Integration
QS105
Classroom (1 day)

No

Proceed to training path:
[Telelogic Synergy](#)

or

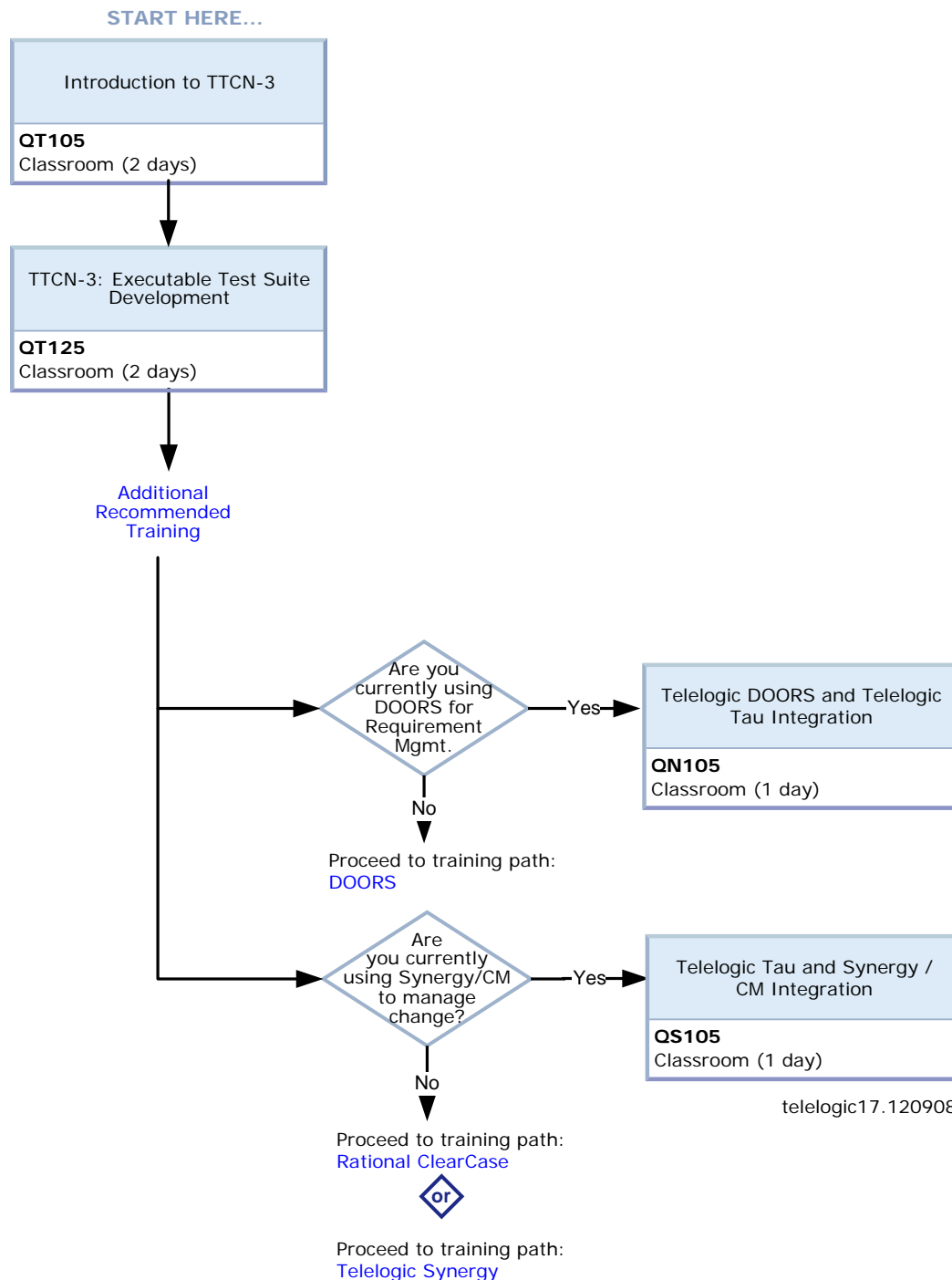
Proceed to training path:
[Rational ClearCase](#)

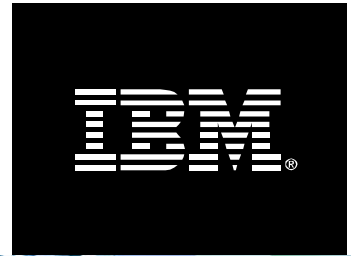


Telelogic Tester / Test Architect

Builds and maintains a test suite, for all activities related to the project. This includes defining the Test Strategy, Test Environment Configuration, and Test Automation Architecture, as well as defining the test case design, test data, and regression test design.

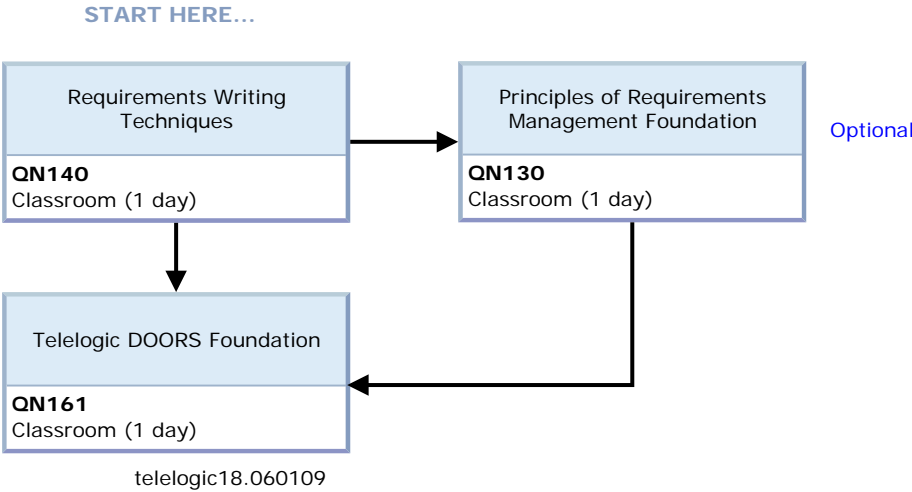
The Test Architect will identify the appropriate techniques, tools, and guidelines to design and implement the required tests and ensure its successful implementation.

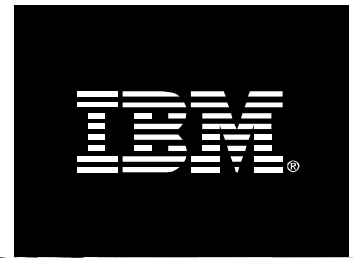




DOORS Foundation User

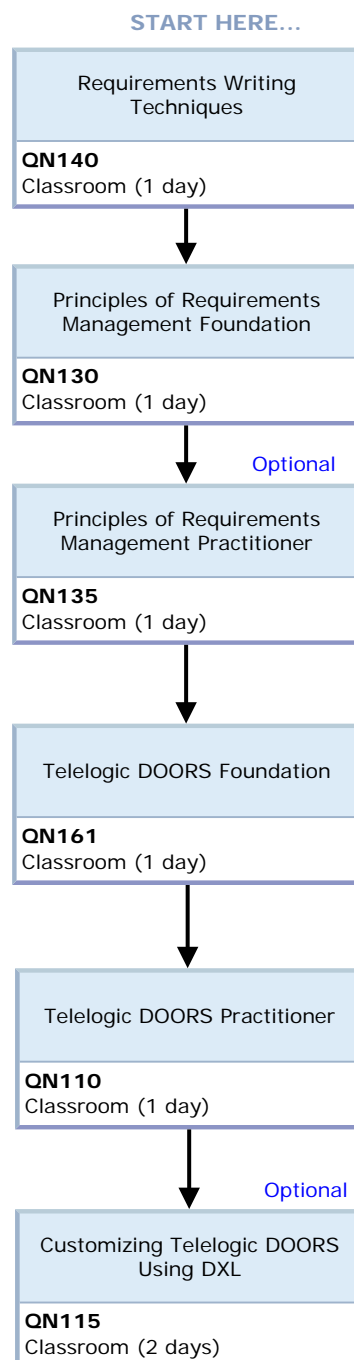
Telelogic DOORS Foundation Users are users of DOORS within a team that carry out day-to-day functions within DOORS. This includes anchoring (including attributes and traceability information) reviewing an amending data. Your responsibilities may include quality assurance and implementation of the company requirements management process.





DOORS Practitioner

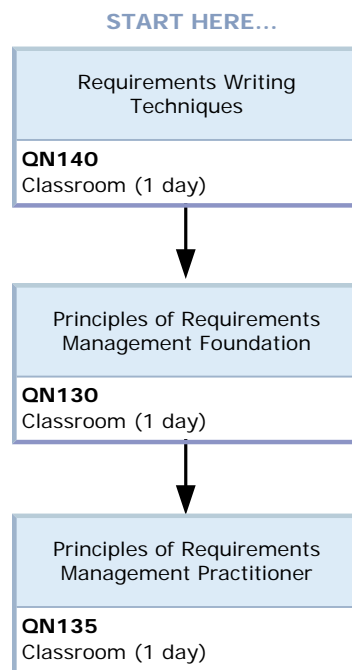
Telelogic DOORS Practitioners are experienced users of DOORS within a project, possibly as a team leader who needs to coordinate and manage the work with a team(s). In addition to Foundation User tasks, this may include approval and validation of requirements and documentation. You may also be called upon to utilize more advanced functionality and use DOORS in conjunction with other applications.



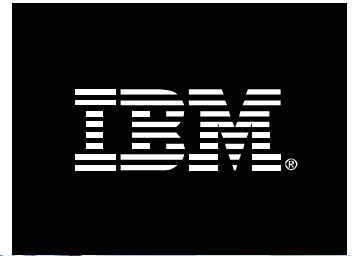


Requirements Management Process Manager

Requirements Management Process Managers are responsible for defining the Requirement Management Process, the information architecture to support it, its implementation and its use in DOORS, ensuring process repeatedly and its governance.



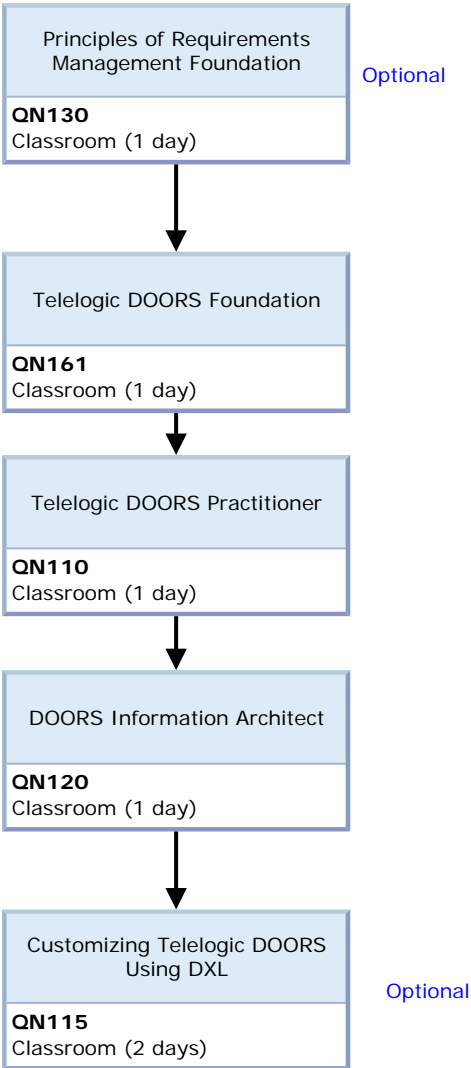
telelogic20.121208



DOORS Database Manager

DOORS Database Managers are responsible for implementation and maintenance of the information architecture and may also be involved in tool deployment and account management.

START HERE...





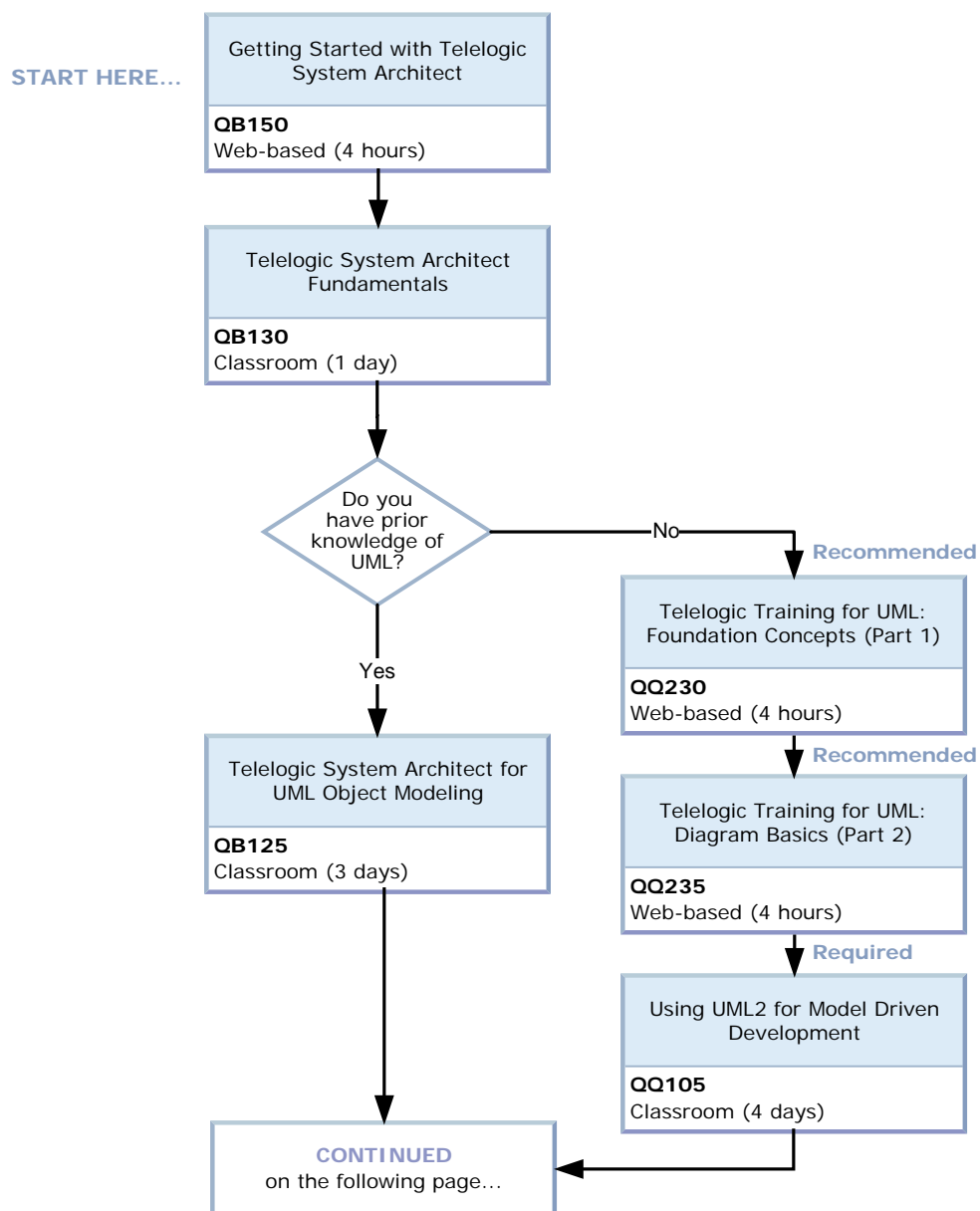
Solution Architect

Architect the complete solution with end-to-end responsibility. Oversee and coordinate the design of a new solution, application or component.

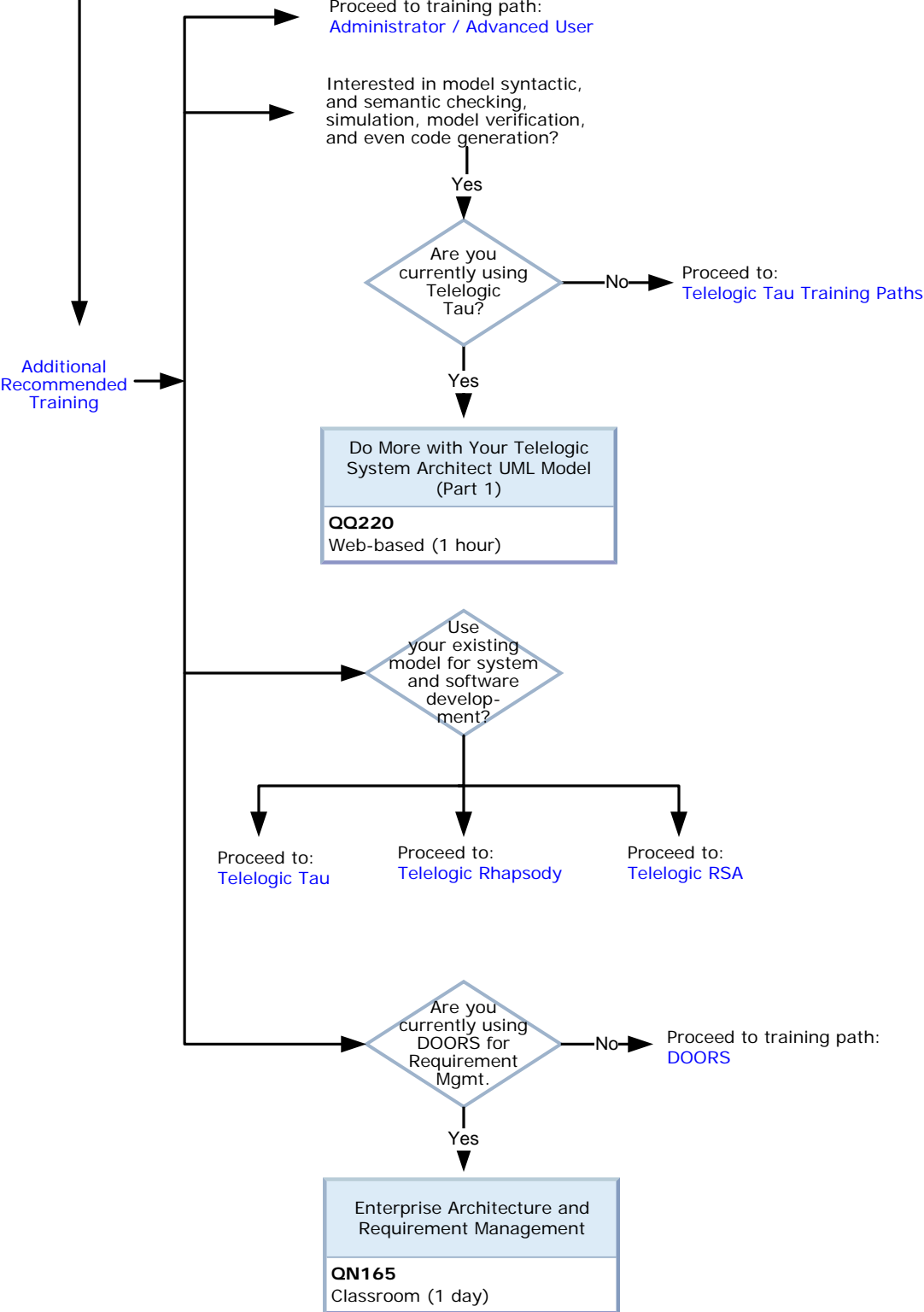
Responsible for leading or participating in all aspects of the design, development, deployment, and operational management of the solution and related components. Based on the specified functional (IT infrastructure) and nonfunctional business requirements, Solution Architects have overall responsibility for driving the major technical decisions, responsible for the overall structure and layout of the enterprise IT systems, which includes the following:

- The interface of new business services
- IT strategies and expected behavior of service

The task flows for enabling the business service



CONTINUED
from the previous page...





Certified Enterprise Architect Carnegie Mellon Enterprise Architecture Certification

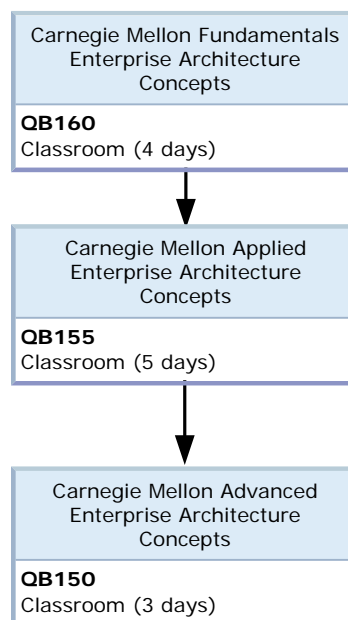
The Carnegie Mellon Enterprise Architecture Certification is offered in a three-course curriculum. The program curriculum covers over 350 learning points that map to the Federal CIO Council's competency matrix for Enterprise Architecture and is compiled from the experience and best practices of top organizations worldwide. CMU's Institute for Software Research (ISR), one of the world's leading IT education and research centers, developed this program's unique curriculum.

Gain an Enterprise Architecture Certification through this program:

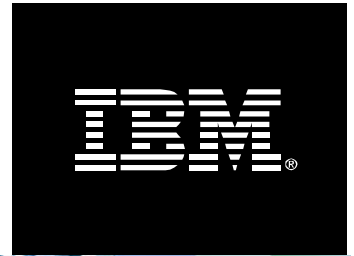
- Attain "Certified Enterprise Architect" after passing exams following the Fundamentals and Advanced courses, and participating in the labs in the Applied course
- Learn what you need to know, from theory to implementation to program management, from one comprehensive program
- Access courses worldwide through IBM

This Enterprise Architecture Certification Program will give you the Enterprise Architecture knowledge you need to ensure your organization's IT strategies remain aligned with business objectives.

START HERE...



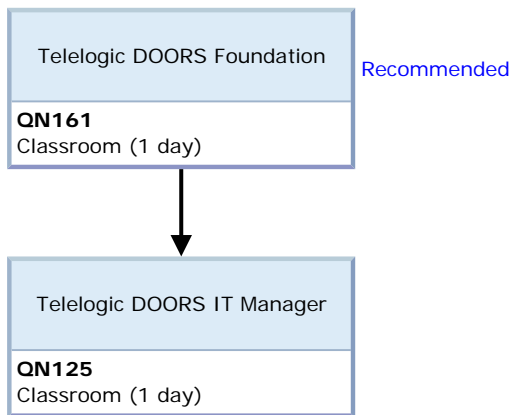
telelogic24.121108



DOORS IT Manager

A DOORS IT Manager is responsible for installing the software, licensing, patches, upgrades or integrations and possibly account management, especially pertaining to companies using corporate LDAPs.

START HERE...



telelogic25.060109